

Recycling Guide



Information to Households Handling and Recycling Waste

A Green Poseidon

Our aim is to make it as easy as possible for our tenants to dispose of their waste in an environmentally correct way.

An important part of this work is this brochure, which contains information about how to handle and dispose of different types of waste.

It is particularly important that hazardous waste like batteries and electrical waste do not end up in your normal garbage. See page 14.

It is also important that metal packages, plastic packages and newspapers are sorted to ensure they can be recycled.

By law, everyone must separate hazardous waste, packages and newspapers from the rest of their waste.

The local gardener 'Miljövården'

The local gardener will be only too happy to answer your questions about recycling. In some residential areas we do not have a local gardener, in which case you can contact your caretaker 'husvården'. You will find the telephone number in the entrance hall.

Recycling centres (house, room or other system)

Most of our tenants have access to recycling rooms where they can sort newspapers, packages, bulbs, fluorescent lamps, batteries, food waste and residual waste.

Where you dispose of your residual waste and food waste depends on the area in which you live. Talk to your local gardener or caretaker. If you do not have a local recycling room; newspapers, packages and batteries must be taken to a district recycling station 'återvinningsplats'.

Information about district recycling stations can be found at www.goteborg.se. You can also phone the Kretslopp och vatten Customer Service Department on 031-368 27 00.

Everything you recycle is used to produce something new



Food waste becomes biogas



Metal packages become



Plastic packages become



Paper and cardboard packages become



Newspapers and printed matter become



Coloured glass becomes



Clear glass becomes



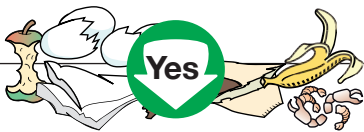
Foto: FTI.



Food waste

We collect food waste in most areas.

Talk to your local gardener or caretaker if you have any questions about food waste collection.



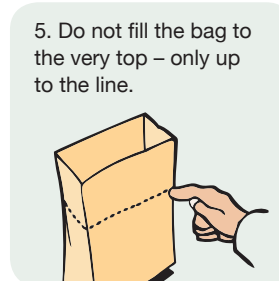
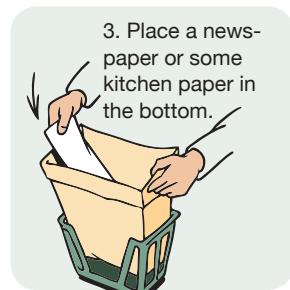
- Food waste, cooked and uncooked
- Fruit and vegetable waste
- Eggs (including shells)
- Bread
- Coffee grounds, coffee filters
- Tea leaves and teabags
- Household paper and napkins
- Cut flowers



- Tobacco, stubs and snus
- Nappies and sanitary items
- Textiles
- Vacuum cleaner bag contents
- Cat litter and wood shavings
- Sand, soil, clay and gravel
- Barbecue charcoal and wood ash

Brown bags

Food waste is an important resource which should be sorted and placed in the brown bag. The food waste that is collected is taken to a processing plant where it is used to make energy-rich biogas for vehicles and nutrient-rich fertilizer.





Residual waste

Anything that remains after you have sorted is known as residual waste and is placed in the garbage bag. The bag is then sent for incineration and the energy that is generated is used for heating and electricity.



Anything that remains after sorting, such as:

- Worn clothes
- Nappies and wipes
- Small amounts of glass and crockery (well wrapped)
- Dish brushes and dish cloths
- Vacuum cleaner bags
- Envelopes and adhesive labels



- Food waste
- Hazardous waste
- Packages
- Newspapers
- Usable clothes
- Batteries
- Medicines, syringes
- Electrical waste

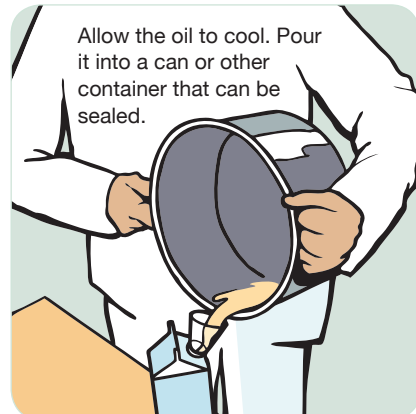
How to dispose of cooking fat and oil

If cooking fat or cooking oil ends up in the drain pipe it will solidify and form clumps. This could cause blockages and overflows in your home or disrupt processing at the sewage works. To avoid this, never pour cooking fat or cooking oil directly into the sink.

COOKING FAT



COOKING OIL





Metal packages

Metal packages should be taken to a recycling room or recycling station.



Foto: FTI.



Here you should place items such as:

- Metal cans
- Aluminium foil
- Metal tubes used for food, e.g. paste tubes
- Lids and caps
- Tea lights (burnt out)
- Empty, dry cans that previously contained paint or glue
- Completely empty aerosol cans



- Cans containing paint and glue
- Aerosol cans that are not completely empty

[illegible]

- Plastic bags
- Soft plastic packages
- Polystyrene
- Crisp bags
- Ketchup bottles
- Shampoo bottles
- Ice-cream cartons



- Plastic toys
- Dish brushes
- Toothbrushes
- CD covers
- Plastic plant pots



- Milk cartons, juice cartons
- Pasta packages
- Washing powder boxes
- Empty toilet rolls
- Wrapping paper
- Cardboard
- Flour and sugar bags
- Paper carrier bags



- Newspapers
- Brochures
- Writing paper
- Envelopes



Newspapers and printed matter

Newspapers and printed matter should be taken to a recycling room or recycling station.



Foto: FTI



Here you should place items such as:

- Newspapers
- Magazines
- Catalogues
- Advertising material
- Brochures
- Writing paper



- Envelopes
- Adhesive labels
- Plasticised paper
- Plastic bags



Coloured and clear glass

Glass packages should be taken to a recycling room or recycling station.



Foto: FTI.



Foto: FTI.



Here you should place items such as:

- Wine and beer bottles
- Soft drinks bottles
- Jam jars



- Drinking glasses
- Crockery
- Ceramics
- Window glass
- Mirrors
- Bulbs

Reuse



Do not dispose of items that are clean and not broken. In some areas we have local reuse centres 'återbruk' or second-hand shops.

You can also hand in items that can be used by help organisations. These organisations provide collection containers for unwanted clothes and shoes.

Many organisations also accept furniture. The five municipal recycling centrals have facilities to receive everything from furniture to clothes. At Kretsloppsparken Alelyckan you can donate or buy pre-used items.

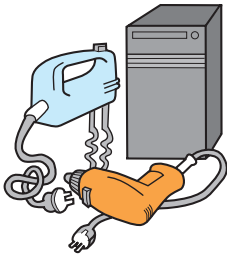
Bulky waste



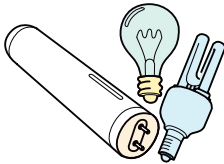
Bulky waste includes large items of household waste, such as Christmas trees, broken furniture and bicycles, but not electrical waste.

If you need to dispose of large items that are broken, contact your local gardener or caretaker for details of the procedure in your area.

Hazardous waste must be collected



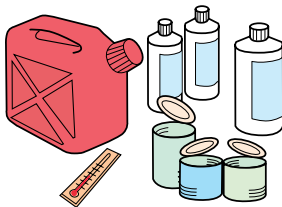
Larger items of electrical waste include television sets, computers, microwave ovens, stereo systems. **Medium-sized items of electrical waste** include coffee machines, electric drills, hairdryers, electric mixers. **Small items of electrical waste** include electric razors, mobile telephones and cables.



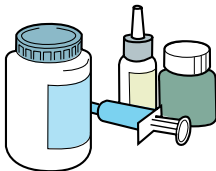
Light sources include bulbs, low-energy bulbs and fluorescent lamps. Make sure they don't break.



Small batteries include dry cell batteries and button cell batteries.



Chemicals include turpentine, paintbrush cleaner, bleach, hair dye, paint, nail varnish, glue, used oil, aerosol cans and their contents. Mercury thermometers must be collected and handled carefully.



PHARMACY

Medicines include all types of drugs, such as tablets, contraceptive pills, liquid medicine, disinfectants and creams. Medicines and syringes can be handed in at a pharmacy.



Collection points for electrical waste and other hazardous waste

You can take light bulbs, fluorescent lamps and batteries to your local recycling room if there is one available. There may also be local collection of electrical waste. Ask your gardener or caretaker. Batteries could be taken to the district recycling station.

Collection point	You can hand in
Recycling centres 'återvinningscentraler' (Tagene, Sävenäs, Bulycke, Högsbo, Alelyckan).	Electrical waste, car batteries, small batteries, light sources, chemicals etc.
Recycling points 'miljöstationer' can be found at certain gas stations.	Car batteries, small batteries, light sources, chemicals.
For hazardous waste, vehicles 'Farligt avfall-bilen' operate throughout Gothenburg during the spring and autumn.	Small and medium-sized items of electrical waste, car batteries, small batteries, light sources, chemicals.
Certain electrical stores. See list at www.elektronikatervinning.com	All electrical waste.
Waste containers 'Sammlaren' are available at certain super-markets.	Small items of electrical waste, small batteries, aerosol cans with contents, light sources.

Information about local authority collection points is available at www.goteborg.se. If you call the Kretslopp och vatten Customer Service Department on 031-368 27 00, they can provide all the information you require about collection of electrical waste and another hazardous waste, recycling central opening hours etc.

Thank you for recycling
and contributing to a better
environment



Göteborgs Stad
Kretslopp och vatten

www.goteborg.se



www.poseidon.goteborg.se

This brochure is a joint production by Bostads AB Poseidon and Kretslopp och vatten.